



PARTS AND PACKING LIST

SINCE 1936, THE GRANULAR APPLICATOR PEOPLE /

528 Gandrud Road, Owatonna Minnesota 55060 U.S.A. 507/451-5430

36H13 Variable Rate Spreader Package

Push Model w/ 13 Inch Pneumatic Tires and Spreadplate

(All Hardware In Hardware Bag Unless Otherwise Noted)

- 1.....28368751.....Hopper, 36 Inch
Use: 6 Latches Assembly (280692) (in place)
12 Rivet (4/16)(C17-0250-050) (in place)
- 1.....2808886-9.....Lift Handle (in hardware bag)
Use: 2 Hex Bolt (1/4 x 5/8)(C03-0250-020)
2 Whiz Flange Nut (1/4)(C01-0250-030)
- 1.....28308654-1.....Retainer, End Bearing Left
Use: 1 SAE Washer (5/16)(C02-0312-020)
1 Wing Nut (5/16)(C01-0312-020)
- 1.....28308654-2.....Retainer, End Bearing Right
Use: 1 SAE Washer (5/16)(C02-0312-020)
1 Wing Nut (5/16)(C01-0312-020)
- 2.....090693.....End Bearing
- 1.....2807953.....Center Bearing
Use: 1 Whiz Flange Nut (5/16)(C01-0312-030) (in place)
1 Hex Bolt TC (5/16 x 1)(C03-0312-042) (in place)
- 2.....28368755.....Rotor Bar, Tri Rod
- 2.....2807156.....Washer (in place)
- 1.....28368768.....Bottom & Slide (in place)
Use: 4 Nylon Grip Washer (1/4)(C02-0250-011) (in place)
4 Whiz Flange Nut (3/16)(C01-0187-030) (in place)
1 Wing Nut (5/16)(C01-0312-020) (in place)
1 SAE Washer (5/16)(C02-0312-020) (in place)
1 Cam Gauge (2807175) (in place)
1 Rear Hanger (28368712) (in place)
- 1.....2836878.....Spreadplate, 36 Inch
Use: 1 Sash Chain With Hook (28368785-1) (in place)
1 Cotter Pin (3/16 x 1-1/4)(C20-0187-030) (in place)
- 1.....2830868-4.....Mounting Bracket, Hook (in hardware bag)
- 1.....28368767.....Brace, Handle
Use: 2 Hex Bolt (1/4 x 1/2)(C03-0250-010)
1 Hex Bolt (1/4 x 1-1/2)(C03-0250-061)
3 Whiz Flange Nut (1/4)(C01-0250-030)
1 Lock Nut, Nylon (1/4)(C01-0250-040)
1 Wrought Washer (1/4)(C02-0250-030)

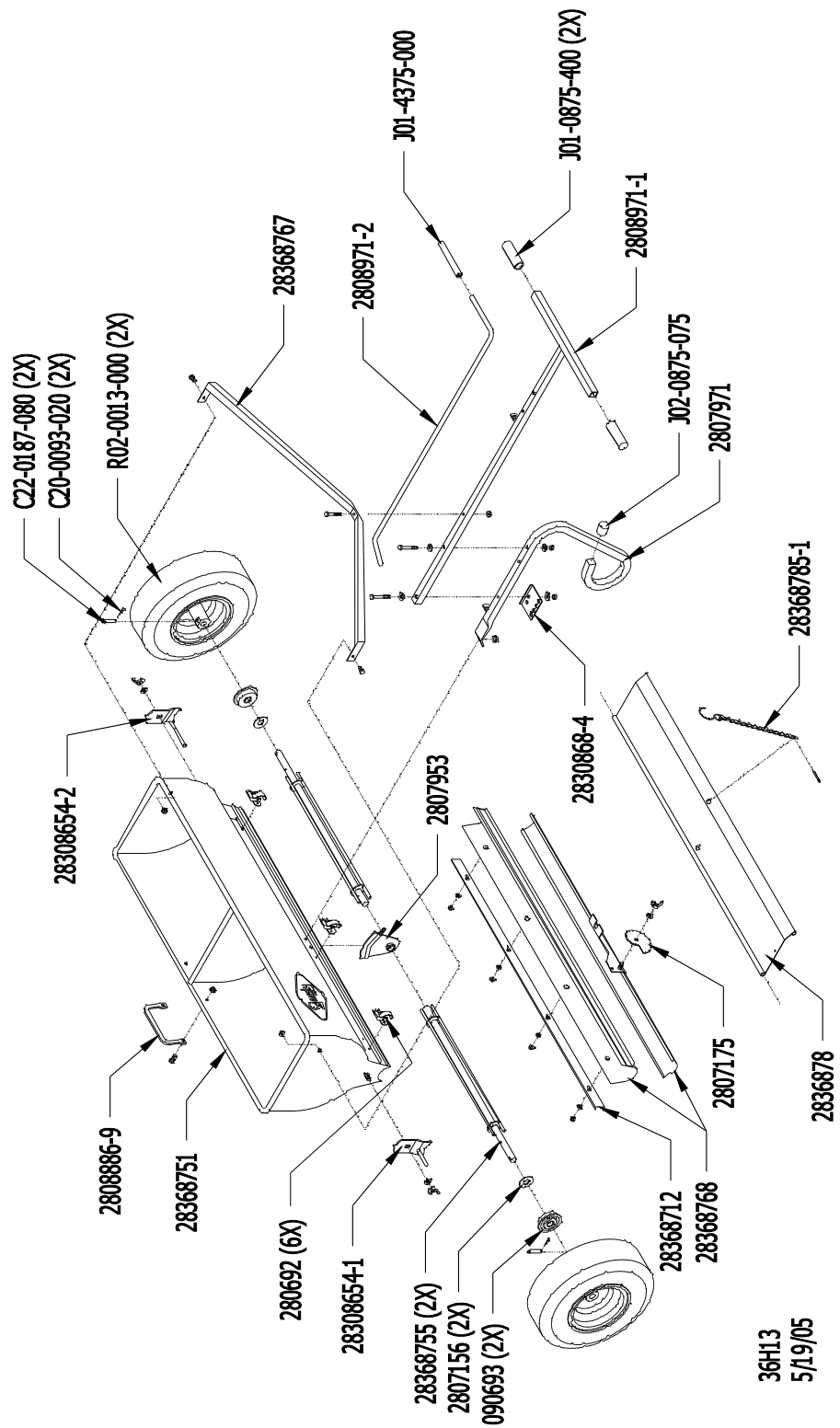
- 1.....2808971-1..... Handle
Use: 2 Grip, Yellow (7/8 x 4)(J01-0875-400)
- 1.....2808971-2..... Shut-Off Lever
Use: 1 Grip, Black (7/16 x 3)(J01-4375-000)
- 1.....2807971..... Parking Stand
Use: 1 Plastic Cap, Yellow (7/8 x 3/4)(J02-0875-075)
2 Hex Bolt (1/4 x 2)(C03-0250-080)
2 Lock Nut, Nylon (1/4)(C01-0250-040)
4 Wrought Washer (1/4)(C02-0250-030)
- 2.....R02-0013-000..... Wheels, 13 Inch Pneumatic
Use: 2 Cotter Pin (3/32 x 3/4)(C20-0093-020)
2 Clevis Pin (3/16 x 1-1/2)(C22-0187-080)

1.....24H13-H..... Hardware Bag Containing:

- 4.....C01-0250-030..... Whiz Flange Nut (1/4)
- 3.....C01-0250-040..... Lock Nut, Nylon (1/4)
- 5.....C02-0250-030..... Wrought Washer (1/4)
- 2.....C03-0250-010..... Hex Bolt (1/4 x 1/2)
- 2.....C03-0250-020..... Hex Bolt (1/4 x 5/8)
- 1.....C03-0250-061..... Hex Bolt (1/4 x 1-1/2)
- 2.....C03-0250-080..... Hex Bolt (1/4 x 2)
- 2.....C20-0093-020..... Cotter Pin (3/32 x 3/4)
- 2.....C22-0187-080..... Clevis Pin (3/16 x 1-1/2)
- 1.....J01-4375-000..... Grip, Black (7/16 x 3)
- 2.....J01-0875-400..... Grip, Yellow (7/8 x 4)
- 1.....J02-0875-075..... Plastic Cap, Yellow (7/8 x 3/4)
- 1.....2808886-9..... Lift Handle
- 1.....2830868-4..... Mounting Bracket, Hook

Assembly Instructions:

1. **Assemble Stand/Shut-Off Lever/Handle:** Remove contents from carton. Place hopper upside down. Thread right angle of shut-off lever upwards through lever guide on parking stand until tab rests against stop on lever. Slip same right angle of lever upwards through lever guide tab on handle, and fasten handle to stand with two 1/4 x 2 hex bolts, wrought washers and nylon lock nuts. Attach hook mounting bracket to hole closest to hopper on parking stand as shown in drawing.
2. **Attach Handle Assembly:** Attach end of handle-stand assembly to hopper body with whiz flange nut. Be sure shut-off is in slot on hopper bottom. Note: If necessary, hopper bottom may be removed by snap latches to facilitate alignment on center bearing with self-taping screw.
3. **Install Brace:** Turn spreader up right. Attach angle brace to hopper ends using 1/4 x 1/2 hex bolt and whiz flange nuts. Secure center of brace to top of handle with 1/4 x 1-3/4 hex bolt, wrought washer and nylon lock nut. **Note:** Brace has center “U” indentation upward.
4. **Attach Grips:** Place yellow grips on handle, on parking stand tip and black grip on shut-off lever.
5. **Install Lift Handle:** Attach lift handle to hopper using 1/4 x 5/8 hex bolts and whiz flange nuts.
6. **Spread plate Adjustment:** Place hook of spread plate chain in hole of bracket on handle. Adjust spread plate to desired level depending on rate of application and product weight to produce “sheet-like” flow. If application without spread plate is desired, swing spread plate to front of spreader and position hook over lip of hopper.



drawing: 36H13

Page 3 of 3
 December 6, 2005
 Revised From (6/27/05)
 (36H13) mw
 Printed in the USA